



GREAT STUFF PRO™ WALL & FLOOR ADHESIVE

STRONG BOND, WET OR DRY



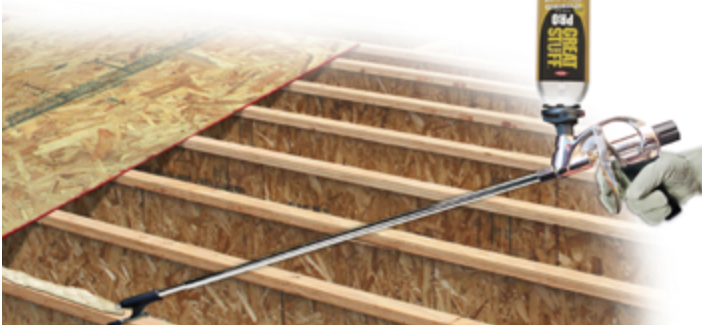
GREAT STUFF PRO™ Wall & Floor Adhesive delivers serious bonding power, in almost any working condition. Because of its excellent bonding power on dry, damp and even frozen lumber, GREAT STUFF PRO™ Wall & Floor Adhesive provides a fastgrab tack and long-term high-strength bond, even in conditions that might stop traditional adhesives, leading to fast and reliable installations.

A Firm All-Around Grip

GREAT STUFF PRO™ Wall & Floor Adhesive is a premium grade heavy-duty adhesive for interior and exterior use. It is designed to bond:

- Plywood and OSB subflooring to wood joists
- Foam panels, drywall, OSB and plywood to wood framing
- Masonry, tile and concrete substrates to OSB, plywood, foam panels and drywall

GREAT STUFF PRO™ Wall & Floor Adhesive is available in gun applied formulation and in the United States a reusable straw applicator.



Dispensing guide tip aligns gun over framing lumber.



Cream in color, GREAT STUFF PRO™ Wall & Floor Adhesive is available in 26.5 oz (751g) cans. One can of GREAT STUFF PRO™ Wall & Floor Adhesive (gun applied) equals up to 16 nominal quart tubes of traditional caulk adhesive, helping stretch the building budget even farther.*

A Long Reach

Stand up when applying GREAT STUFF PRO™ Wall & Floor Adhesive with the PRO 14XL Series long-barrel dispensing gun (40" [1 m] barrel). A guide tip, specially designed for PRO 14XL, helps control the position of the bead. Like the short barrel PRO 14 Series gun, PRO 14XL features:

- Durable, lightweight, high-strength aluminum body
- Nonstick can adapter and needle
- Good bead control; allows variable bead size
- No post-dispensing foam drip
- Large flow control knob with secured back-screw system



* Field demonstrated yield comparison. If theoretical yield is compared, one can of GREAT STUFF PRO™ Wall & Floor Adhesive (26.5 oz/751 g) (gun applied formulation) applied at 1/4" bead diameter will equal up to 16 nominal quart tubes of caulk adhesive (28 oz/794 g) applied at 1/4" bead diameter.

Sticking Points

GREAT STUFF PRO™ Wall & Floor Adhesive is applied with a PRO Series foam dispensing gun for a simple and neat application. And the secure bond created with GREAT STUFF PRO™ Wall & Floor Adhesive helps reduce nail pops in drywall, and floor and stair squeaks – which will help minimize callbacks. In addition to its ability to adhere to dry, damp or frozen lumber, GREAT STUFF PRO™ Wall & Floor Adhesive features:

- All-weather formulation with freeze-thaw stability
- Excellent bonding to plywood, rigid foam insulation, drywall, concrete and more
- Tack-free in approximately 14 minutes; fully cured in 24 hours
- Ability to reduce drywall nail pops and floor squeaks
- High yield formulation

Across the Board Adhesion

GREAT STUFF PRO™ Wall & Floor Adhesive is compatible with rigid foam insulation from Dow as well as lumber, plywood, particleboard, masonry, drywall and concrete. And its excellent bonding power means fewer fasteners may be required. GREAT STUFF PRO™ Wall & Floor Adhesive can be applied in a single 1/2" bead on joists and studs. For optimum performance, apply adhesive bead in a continuous zigzag, ensuring adhesive layer will completely cover joists and framing on sistered joists or studs or wherever wood panels and drywall edges meet.



PRO Series Foam Dispensing Guns

GREAT STUFF PRO™ 13, 14, 15 Dispensing Guns

GREAT STUFF PRO™ 14XL Long Barrel Dispensing Gun

- Precision application
- High yield
- No drip
- 30 day restartability



Formulated for the Pros

Count on the GREAT STUFF PRO™ family of products to help you handle the toughest jobs.

- GREAT STUFF PRO™ Wall & Floor Adhesive
- GREAT STUFF PRO™ Gaps & Cracks Insulating Foam Sealant
- GREAT STUFF PRO™ Window & Door Insulating Foam Sealant
- GREAT STUFF PRO™ Pestblock Insulating Foam Sealant
- GREAT STUFF PRO™ Gun Cleaner



Not available for sale in South Coast and Ventura air districts of California

In the United States

The Dow Chemical Company
Dow Building Solutions
200 Larkin Center
Midland, MI 48674

In Canada

Dow Chemical Canada ULC
Dow Building Solutions
2400, 215 – 2 Street S.W.,
Calgary, Alberta T2P 1M4

For Technical Information:

1-866-583-BLUE (2583) - English
1-800-363-2610 - French

dowgreatstuff.com

dowadhesives.com

dowbuildingsolutions.com

For Sales Information:

1-800-232-2436 - English
1-800-565-1255 - French

NOTICE: No freedom from infringement of any patent owned by Dow or others is to be inferred. Because use conditions and applicable laws may differ from one location to another and may change with time, Customer is responsible for determining whether products and the information in this document are appropriate for Customer's use and for ensuring that Customer's workplace and disposal practices are in compliance with applicable laws and other government enactments. The product shown in this literature may not be available for sale and/or available in all geographies where Dow is represented. The claims made may not have been approved for use in all countries. Dow assumes no obligation or liability for the information in this document. References to "Dow" or the "Company" mean the Dow legal entity selling the products to Customer unless otherwise expressly noted. NO WARRANTIES ARE GIVEN; ALL IMPLIED WARRANTIES OF MERCHANTABILITY OR FITNESS FOR A PARTICULAR PURPOSE ARE EXPRESSLY EXCLUDED.

The buyer assumes all risks as to the use of the material. Buyer's exclusive remedy or any claim (including without limitations, negligence, strict liability, or tort) shall be limited to the refund of the purchase price of the material. Failure to strictly adhere to any recommended procedures shall release The Dow Chemical Company of all liability with respect to the materials or the use thereof. The information herein is not intended for use by non-professional designers, applicators or other persons who do not purchase or utilize this product in the normal course of their business.

Dow Polyurethane Foam Insulation and Sealants

CAUTION: When cured, these products are combustible and will burn if exposed to open flame or sparks from high energy sources. Do not expose to temperatures above 240°F (116°C). For more information, consult (Material) Safety Data Sheet ((M)SDS), call Dow at 1866583BLUE (2583) or contact your local building inspector. In an emergency, call 19896364400 in the U.S. or 15193393711 in Canada. When air sealing buildings, ensure that combustion appliances, such as furnaces, water heaters, wood burning stoves, gas stoves and gas dryers are properly vented to the outside.

See website: <http://www.epa.gov/iaq/homes/hip-ventilation.html>. In Canada visit <http://archive.nrcnrc.gc.ca/eng/ibp/irc/bsi/83-house-ventilation.html>.

GREAT STUFF PRO™ insulating foam sealant and adhesive products contain isocyanate and a flammable blowing agent. Read all instructions and (Material) Safety Data Sheet ((M)SDS), carefully before use. Eliminate all sources of ignition before use. Cover all skin. Wear long sleeves, gloves, and safety glasses or goggles. Not for use in aviation, or food/beverage contact, or as structural support in marine applications. Provide adequate ventilation or wear proper respiratory protection. Contents under pressure. Not to be used for filling closed cavities or voids such as behind walls and under tub surrounds; this improper use of the product could result in the accumulation of flammable vapors and/or uncured material. Failure to follow the warnings and instructions provided with the product, and/or all applicable rules and regulations, can result in injury or death.

GREAT STUFF PRO™ Gun Cleaner is flammable and contains acetone and propane. Read all instructions and (M)SDS carefully before use. Eliminate all sources of ignition before use. Cover all skin. Wear gloves, and goggles or safety glasses. Provide adequate ventilation or wear proper respiratory protection. Contents under pressure.

Building and/or construction practices unrelated to building materials could greatly affect moisture and the potential for mold formation. No material supplier including Dow can give assurance that mold will not develop in any specific system.